



VOL 10/12

PRESIDENT'S REPORT

October 2012

Have you ground yourself a curved skew chisel and used it for smoothing and scraping like Michael Bell does? And have you reinforced in your mind something you would have heard before – have a clean angle for a spigot so that the piece will still run true if it is removed and replaced?

Michael certainly showed us “oldies” how to do it.



When the Nunawading library was recently refurbished new top class display cases were included. Have you had a look at the Guild's excellent display? This shows a wide variety of high class items of which the Guild can be proud. Thank you to those who gave items to be displayed until the end of October.

In the Early days of the Guild the then president, the late Harold Irving persuaded the Guild to make and supply toys for needy children. This practice still continues so we will need a good supply to give, on 24th November, to representatives from the Salvation Army and Eastern Emergency Relief. Please help.

The committee has decided to organize a Christmas Break-up function again – similar to the last two years. The cost will be \$15 per person attending. If you wish to help by providing any of the food items mentioned later in Talking Turning you can be reimbursed for the cost of ingredients. An accurate number of attendees will assist with catering so if you are not able to attend our October meeting and wish to attend the Luncheon please let a committee member know.

When you meet her please make welcome our newest member, Joanne Mott - she is a regular attendee on Thursdays.

Have you wondered how Rick Gilks is able to hold the pieces together when he is making one of his soccer balls? You will find out at our October meeting. Please do not be embarrassed if he asks you to have a go. Rick will also show the working of a laser beam used to show internal measurements and which he has previously mentioned.

You know the importance of Show and Tell to you and all others so---
See you on the 27th
Ray

SHOW & TELL Lead by Gary Voyer



Natural edged bowls by Ross Gabrielle. Myrtle and Camphor Laural woods. Shellawax finish.



David Coull art pieces inspired by David Springet techniques. Made from Cypress pine & Pine.



Toys for Christmas Appeal by Alan Thompson. Hope this inspires other members to start making their toy donations. Blackwood bowl also by Alan. The grain in this item was stunning.



Flat bowl from beautiful birds eye myrtle and lidded container utilised a peice of wood gained from last months raffle. Both pieces by Ray Smith.



John Osborne (2) has been busy, bud vase from possibly mulga wood? and Cindy Drozner box from sasafra and huon pine.



Blast from the past; Jacaranda Vase with dowel inserts by Ron Dunston and Reg Johnson candle holder laminated in red gum & ash.



Three vases from Val Dalsanto in claret ash, cherry and wattle. also Bowl in tea tree by John O (2)

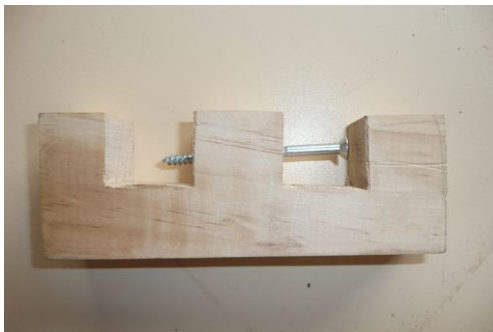
SHOW & TELL CONTINUED



Three nesting bowls by Geoff Easton. Made from Cotton Astor, Geoff finds this an excellent wood to turn.



Blackbean Pot Pourri Bowl made by Graham Besley. Face mask and extraction system were running when turning this potentially hazardous wood.



Conundrum from Ron Dunston:

How was this made??

Answer: Boil the wood until it is very pliable, then squeeze one end with a screw clamp until the center can be drilled and the screw inserted. Releasing the clamp allows the wood to return to its original shape. Best done with soft wood.

CHRISTMAS BREAK UP LUNCHEON 24th NOVEMBER

The committee is organising the Christmas Break up Luncheon in a similar fashion to last year. The cost will be \$15 per person.

Please pay John Osbourne your money on the day. He will be collecting the money as Geoff will unfortunately be away.

Members of the committee are providing some of the catering needs and are wondering if other Guild members may like to contribute from the following list. The cost of ingredients will be reimbursed.

If you wish to do so, be prepared to nominate any of these on a sheet to be sent around at the next meeting.

- | | |
|-------------------------|---------------------------|
| 2 Bowls of Potato salad | 1 Pasta salad |
| 2 Bowls of Coleslaw | 1 large pavlova |
| 2 Bowls of Garden Salad | 2 cheese cakes |
| 2 Bowls Greek salad | 1 platter Assorted cheese |
| 1 fruit salad | 1 trifle |

Christmas Toy Appeal. Hope you are in the throws of making some toys for donations to the Salvation Army and Eastern Relief Appeal. Toys need to be completed ready for the November 24th meeting. Only 5 weeks to go!

GUEST DEMONSTRATOR MICHAEL BELL

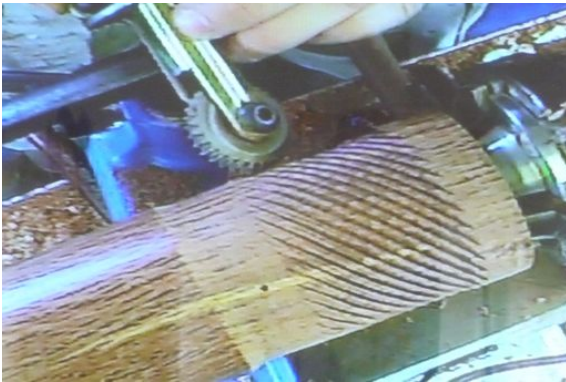
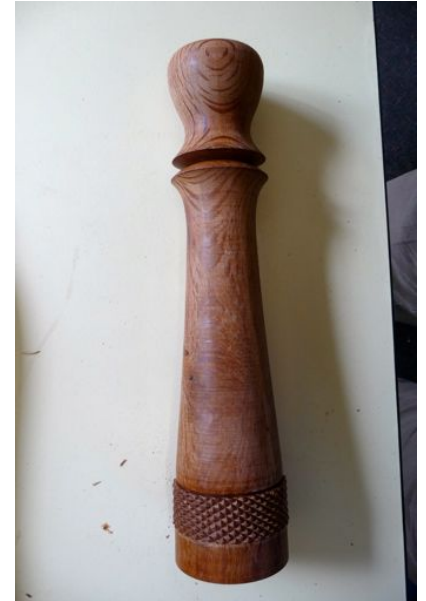


At our September meeting we were again given the pleasure of watching the young talent of Michael Bell.

Michael demonstrated the making a pepper grinder out of Bull Oak wood using the 'Crushgrind' mechanism.

The emphasis of the demo was to show the turning steps, the design process and an embellishing technique.

I believe we all found Michael's talk very informative and full of useful tips.



Michael gave an excellent explanation on how to make spiraling cuts as a form of decoration. The lathe was run at 400rpm Starting the cut is the critical bit. Just enough downwards raking pressure to bite into the wood then sideways movement at a steady rate.

A number of passes are required to get adequate cutting depth. To achieve a diamond pattern, the tool is then run in the opposite direction. Works best on hard woods.

Start & finishing areas are turned back to produce a crisp edge.

I think a fair bit of practice is needed to do a good job.

Wire brushing completes the surface finishing step.



Some of the specialist tools used to make the grinder; From left to right;

- Irwin double spiral fluted cutter gives a true 25mm hole down the center of the grinder. Tip ground to remove screw teeth.
- Spiral cutter which has a range of cutter sizes and adjustment for the angle of the cut.
- Combined end mill cutter for the holes required to hold the grinding mechanism. (Useful if you are producing a number of the grinders) Individual forstner bits can be used as an alternative.
- Recess tool to make an internal ring that the mechanism clips into.
- Chatter tool made from an old knife, used to give the top knob some decorative appeal.
- Skew with rounded edge. Michael used this tool a lot for shaping the outside of the grinder body.



MICHAEL BELL Demonstration Continued

Some tips picked up;

- Sharpen points on drill bits with diamond hone.
- A drop of linseed oil can make drilling of hard woods easier.
- Remove the drill bit frequently to keep the tip clear of swarth.
- Stand back from the lathe to get a look at the overall design shape and proportion.
- Chatter tool needs to be sharp and lathe run at 300rpm max.
- Sanding of internal holes can be easily achieved with sandpaper on a rod (refer photo).
- Final finish with wax that has a nice smell, then buffed helps sell the article.
- When assembling the Crushgrind mechanism, tap into position with a wooden block with hole to eliminate pressure on the ceramic grinder. Remove two lugs so that pressure on side grain section is eliminated.
- Use pvc pipe pieces as a soft jaw around spigot on top knob when reverse chucking. This prevents chuck marks.



Lidded Container Tips:

Michael gave some good advice for making lidded containers.

There is often a need to remove work on & off the chuck. To achieve reliable repositioning, the spigot must have the following attributes;

- Diameter must be set so the chuck almost fully closes.
- Length must ensure the back surface of the chuck is clear.
- Taper of spigot must accurately match the chuck jaws.
- Vertical face that meets chuck jaws must be true and ensure there is no 'bead' in corner between taper and vertical face.
- Retain a center point as this enables accuracy when reverse chucking.
- Mark a jaw number when removing after first use to establish alignment next time its repositioned.



Square edges on lid are important, avoid angled fits. Lid fit should be very tight until final sanding. Leave container for a week or more before final sanding so that any wood movement that often occurs can be accommodated. This ensures the lid ultimately fits perfectly. Sand joint edges with metal plate under sandpaper to retain the square edge.

LIBRARY DISPLAY

Have you been to the new Nunawading Library? We have some excellent items made by Guild Members in some of the display cases near the entrance. The new Library and the display cases are very impressive.



WHITEHORSE SPRINGFEST

We had a great day this past Sunday.

A good turnout of members and very pleasing to have some of our less experienced members doing some of the demonstrating.

The weather was very pleasant and there were lots of other interesting exhibitors to visit.

Sales of turned items was down but interest from the general public was encouraging.



SOME REMINDERS!!

Annual fees are due. If you have not already paid, please see Geoff at the meeting next Saturday. Prompt payment is appreciated.

Next Meeting is Saturday 27th October. Does any one else feel that the end of the year is quickly approaching? Rick Gilks will be our esteemed demonstrator.

And to finish with a bit of of a History quiz.....

A noted psychiatrist was a guest at a gathering, and his hostess naturally broached the subject in which he was most at ease.

"Would you mind telling me, Doctor," she asked, "how you detect a mental deficiency in somebody who appears completely normal?"

"Nothing is easier," he replied. "You ask him a simple question which everyone should answer with no trouble. If he hesitates, that puts you on the track."

"What sort of question?"

"Well, you might ask him, "Captain Cook made three trips around the world and died during one of them. Which one?"

The hostess thought a moment, then said with a nervous laugh, "You wouldn't happen to have another example would you? I must confess I don't know much about history."