



VOL 07/23

July 2023

## PRESIDENT'S REPORT

Hi All and welcome to the July Talking Turning

I hope you have managed to avoid catching any of the bugs floating around at the moment and managing to keep warm.

A big thank you to Richard Braun and Gary Jenvey for opening their workshops for us. We visited Richard first, his workshop is very spacious with his machines well set out, plenty of bench space and easily accessible storage areas. Also on display was his area for his lead lighting hobby. I think it made many members very envious. At the end of the visit Richard very generously donated trays and cheese/chopping boards to raffle off to those present. A great way to end the visit.



From a large workshop to a small one which means a place for everything and everything in its place. Gary's workshop requires him to wheel his lathe onto the covered area outside his workshop to allow him to turn. In his shed his machines and tools were well placed to allow easy access. After the workshop visit it was inside for a lovely morning tea of cake, biscuits and a nice warm drink and the meeting. After the meeting we had a tour of the garden and then back inside where we were surprised with hot soup and bread followed by more cake. What a great way to end our visits. Again, thank you to Richard, Marijke, Gary and Kaye for their hospitality.

President's challenge is due at the October meeting and the challenge is to turn a platter. For the open people it must over 250mm in diameter and an all others any diameter they like. The height no matter what diameter must be no greater than 10% of the diameter.

Camp hope toys will be collected at the November meeting.

Upcoming events for the guild include Schwerkolt Cottage on Sunday September 20 and Whitehorse Festival on Sunday October 15.

I have decided that I will be stepping down from the Presidency at the AGM in August. Remember anyone can join the committee so please consider nominating.

By the time you read this I will be on my way to Noosa for couple weeks and then further north for a while.

Until then, Stay Sharp

Rick Hillier.

# NOTICES

## ACCESS TO THE WEB SITE

Could you all please note that for access to our website you just need the password and no longer need to create a user ID.

## CARBATEC 15% OFF

Paid up members of Koonung Woodturning Guild are eligible for 15% discount at CarbaTec. You will be issued with a card when subs are paid.

## Monday Night Discussion Group

Although the Monday night Group is well attended we would like to encourage more members to join in, especially our newer members. It was very encouraging to see up to 12 attend our more recent meetings

The discussions are aimed at helping new and experienced turners to solve problems, improve techniques and finishing objects to obtain very high level of finish.



## Wednesday Group

The Wednesday Group is well attended with 5 or 6 turners most days.

## Thursday Group

If you know of anyone interested in learning wood turning please encourage them to come to our Thursday session of some expert tuition.

It appears the new “WhatsApp” group is working successfully, and the mentors can turning up knowing they have a group to assist.



# UPCOMING EVENTS

- **June Meeting:**

A shed visit has been organised for the June meeting, the details are as follows:  
Commencing at 9.30.

Meeting at Richard Braun's shed at 50 Old Lilydale Rd Ringwood East Melway Map 50 ref D5.  
Followed by Gary Jenvey's Shed at 4 The Pass Croydon Melway Map 50 ref F7.

Gary will be providing morning tea and you will also have a chance to walk around his garden.  
For those who would like to carpool please meet at the carpark opposite the cottage by 9.00AM sharp.

- **July Meeting:**

Graham Besley will be talking about the bowl reimagined. He will be showing us how, by taking a bowl cutting it and putting the pieces back together other forms can be made.

- **August Meeting:**

This will be our annual general meeting



## New Committee Members

**KOONUNG WOOD TURNING GUILD - COMMITTEE MEMBERS WANTED FOR 2023 - 24.**

**HAVE YOU GOT LOTS OF IDEAS?  
ARE YOU READY TO WORK IN A TEAM TO MAKE THESE IDEAS A REALITY?  
ARE YOU AN ENTHUSIASTIC, POSITIVE, AND PROACTIVE PERSON BETWEEN THE AGE OF 10 - 100 YEARS THEN THIS MIGHT BE FOR YOU.**

**CONTACT RICK, GRAHAM OR GARY AND NOMINATE**

## 2023 Events

It's great that clubs are able to make plans for events again. If your club is planning an event during 2023 (and beyond) - or you know of other activities that would be of interest to fellow Woodies - we're happy to include it on the listing (but please give plenty of notice). Lots of members travel and are interested to know about event that might be on when they are in that area.



- **Goulburn Valley Woodworkers** are holding their 31st Annual Woodshow on **28 & 29 October 2023**, 9 am - 4 pm at the Multipurpose Pavilion: Shepparton Showgrounds High Street Shepparton. Demonstrations of carving, box-making, resin art, turning, scroll sawing, pyrography and more. Items for purchase, including milled timber. Event

## Timber, Tools and Artisan Shows 2023

Melbourne - Melbourne Showgrounds 11th-13th August 2023

Brisbane - Brisbane Showgrounds 15th-17th September 2023

Canberra - Exhibition Park (EPIC) 3rd-5th November 2023

Hobart - early 2024

Further information from [their website](#)

## KWTG Attire

Time to update your old worn out KWTG polo or coat, get your first one so you do not stand out at meeting or simply update your old one.



We are currently looking to make available KWTG Polo's and Polar Fleece Zip up Jackets and are looking to see how many we need to order.

Polo's - \$30 and Polar Fleece - \$55.

Email Neale @  
[neale\\_rees@hotmail.com](mailto:neale_rees@hotmail.com)  
or see him at the next meeting.



## Camp Hope - Toys

It is time to start thinking about toys for Camp Hope. The toys are required by our November Meeting and can be any thing you want to make and they should be unfinished to allow the children to put their own colour, design and finish.

## Max Lehmann

Max,s son Ian has all Max,s equipment in a shed at his house. He has asked if we can help to sell some of his larger tools.

We will be sending out a flyer in the next week seeking expressions of interest and pictures of the equipment.

## Nunawading Library Display

Nunawading have allotted us time in December to display our craftsmanship at the library. Please start preparing, so we can have a top quality display of our work.



# PRESIDENT'S CHALLENGE APOLOGY

Last month I wrongly reported the results of the President's Challenge - Novice Section  
The winner of the Novice Section was David Pincus and not Tim Denyer as reported.  
My apologies to both Gentlemen for this error.

David Pincus receiving his award  
From Rick Hillier



A new Presidents challenge which will be due at the October meeting is to make a platter. Platter, Open group minimum diameter 250mm, height max 10% of the diameter, no other restrictions. Novice and Intermediate maybe smaller than 250mm but the 10% height restriction still applies. No other restrictions.

THE NOVICE ENTRIES  
THE INTERMEDIATE ENTRIES  
THE ADVANCED ENTRIES

## SHOW AND TELL - JUNE



Blackwood back scratcher by Rick Hillier finished with Danish Oil.

Also from Rick, a 3 piece box from various timbers and small Blackwood Bowl finished with Danish Oil



bowl

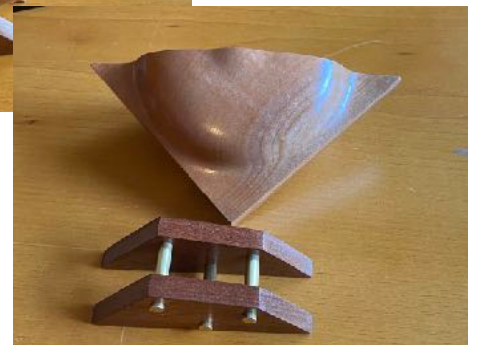
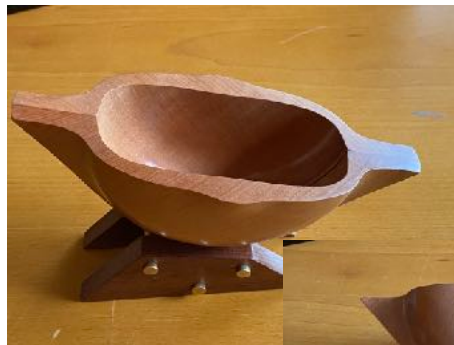




Graham Besley showed a deep hollowed bowl with a lid on an ebonized stand. Look closely and you will also see a miniature of the same bowl and stand.



Graham also had a reimagined piece made from 2 cones joined to form a canoe shape. The cones are Redwood. An Andrew Petotnik design.



Gary Jenvy, small eucalypt box with a Red Gum insert that goes through the lid, Danish Oil. Gary also had a reimagined bowl and stand. The square bowl was cut in half diagonally and glued back together to form a new shape.



Roger Annells, a wooden mallet with a Merbau head and a Tasmanian Oak handle. Finish Danish Oil.



# SHED VISIT

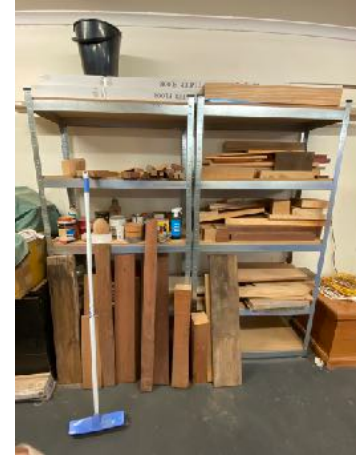
This years "Shed Visit" was a real contrast in shed sizes. We visited 2 sheds this year, Both were around the Ringwood/Croydon area so travelling was not too difficult.

Our first visit was to Richard Braun's Shed, followed by a visit to Gary Jenvey's

## Richard Braun's Shed



Member arriving at Richards



Richard's shed is very large and well lit with both natural and artificial light. It is extremely well equipped with a Nova Lathe, thicknesser, band saw, drill press, table saw, drop saw, sander, scroll saw and most importantly a Frig



Richard kindly donated a tray and some chopping boards for a raffle. Ian Phelan quickly sprang into action and had a raffle going in no time





Richards other hobby is Lead Lighting and an example of his work can be sen in the last few pictures

Thank you Richard for opening your shed and your kind donation for the raffle.



### Gary Jenvey's Shed

Gary's shed by contrast is very small, but still well equiped.

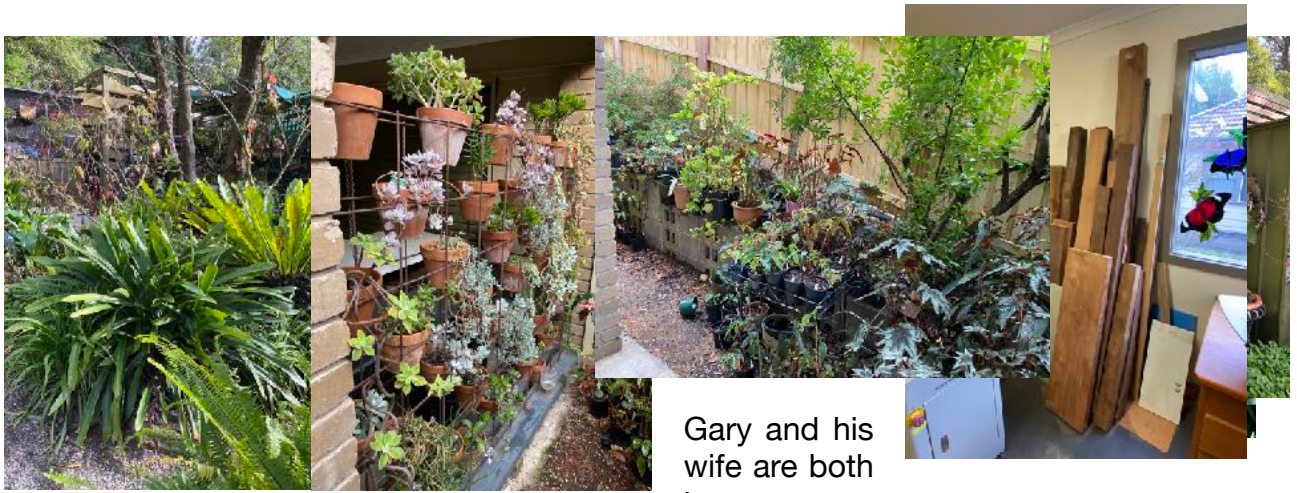
Open the roller shutter and you are in Gary's shed. Note the clock on the le



Gary's shed equipment includes a drill press 2 wheel grinder and a scroll saw. To operate his lathe he wheels it out and under the adjoining carport. One advantage of this is it is easy to keep clean







Gary and his  
wife are both  
k e e n  
in growing Gardenias.

gardeners and specialise

We adjourned inside for a lovely morning tea of cake, biscuits and a nice warm drink. After the meeting we had a tour of the garden and then back inside where we were surprised with hot soup and bread followed by more cake. What a great way to end our visits.

Thank you to Richard and Marijke, Gary and Kaye for their generosity and warm hospitality.