



VOL 09/22

OCTOBER 2022

## PRESIDENT'S REPORT

Hi all and welcome the November Talking Turning

Wow already the last meeting for the year. It has been great to be able to meet in person again and talk to fellow members. So, I hope you are looking forward to meeting everyone at the November luncheon. I encourage you bring along your favourite turning from the year to display for show and tell. As well as that please bring along your toys for Camp Hope.



It was great to see all the varied entries into carving challenge at the October meeting. Eventual winners were Experienced - Mal Jackson, Intermediate - Di Birmingham and Novice – Roger Annells. (See the pics later in TT). It was also great to see our overseas member enter via a photo, thankyou Richard.

We were well represented at the recent Whitehorse Springfest and although the weather threatened to be uncooperative, the day went well. Thankyou to all those that helped to set up, dismantle and demonstrate during the day.

Planning is taking place for activities next year, if you have any ideas, please speak to a committee member.

Stay Sharp

Rick Hillier



The winner of the President's Challenge Mal, Di and Roger

# NOTICES

## **ACCESS TO THE WEB SITE**

Could you all please note that for access to our website you just need the password and no longer need to create a user ID.

## **CARBATEC 15% OFF**

Paid up members of Koonung Woodturning Guild are eligible for 15% discount at CarbaTec. You will be issued with a card when subs are paid.

## **MONDAY NIGHT DISCUSSION GROUP**

Although the Monday night Group is well attended we would like to encourage more member to join in, especially our newer members. The discussions are aimed at helping new and experienced turners to solve problems, improve techniques and finishing objects to obtain very high level of finish.



## **WEDNESDAY GROUP**

The Wednesday Group is well attended with 5 or 6 turners most days.

## **THURSDAY GROUP**

The Thursday Group is has suffered the last few weeks with low attendances, but we are hoping that with the advent of warmer weather attendance will increase. If you know of anyone interested in learning wood turning please encourage them to come to our Thursday session of some expert tuition.

## **ONEMDA**

Recently, at the community house open day, we were approached by Onemda group, to see if we could offer woodturning sessions to a group of teenage kids with serious mental disabilities. Onemda is focused on providing the kids with work experiences so they can achieve some sort of independence.

The kids (probably only two or three at a time) will be supervised and managed by Onemda staff, who would also guide us with how they are reacting to the experience.

The committee has agreed to this community service commencing in February and run in the shed on a Wednesday.

If any members with or without experience of working with mentally disabled people would like to assist in this community service please contact Rick, Graham or Gary

## UPCOMING EVENTS

- **November Break-up** - The November breakup luncheon is to be held on Saturday 26th November, at the Community House commencing at the later time of 10.30, spouses / partners are welcome. The format will be slightly different this year. Along with your Toys for Camp Hope we would like you to bring along your favourite wood turning piece for a final show and tell to remind us of the year that was 2022.



By way of a talk and demonstration we are moving away from wood turning topics. Neale Rees has offered to talk about one of his other passions - Orchid Growing.



Program Remember this meeting commences at 10.30am and enter through the rear door

- 10.30 Members arrive via rear door. Camp Hope toys and Show and Tell items to their respective tables. Food to Kindergarten room.
- 10.45 Show and Tell plus discussion on Camp Hope toys.
- 11.15 Morning tea or grab a cuppa to have with Show and Tell.
- 11.45 Neale Reese presentation on Orchids to partners and interested members. Other members to retire to backyard or shed area.  
Committee set up Luncheon tables and decorations and lay out food in Kinder room.
- 12.30 Lunch Served.  
Between main course and dessert President will provide summary of year and a look ahead. Includes Partners prize draw.
- 2.00 Clean up.



- **Camp Hope Toys** - Please bring your toys for camp hope and remember these are to be unfinished to allow the children to paint and decorate them themselves
- **Pens for the troops** - Pen kits will be available free to members, at the November meeting, to make pens for the troops. The kits are for slimline pens, you will need your own pen mandrel and bushings.  
If you require bushings we have 5 sets available for sale at \$5.00 per set.  
The pens are to be returned at our February meeting to enable them to be delivered to the Army for Anzac Day.  
Grab a few pen kits we are aiming to deliver 50 pens.





# PRESIDENT'S CHALLENGE

Below is a collage of some of the items entered into the challenge



# SPRINGFEST



Our stand at the Nunawadding Springfest was well supported by members who showed their skill demonstrating. We also had plenty of interest from the public



# SHOW AND TELL

Lead By John Osborne



2 Items from Tim Denyer a Red Gum bowl finished with Aussie Oil And a lidded box finished with Triple E



Rick Hillier's hollowed item that he demonstrated later



Di Bermingham showed us her "Turkish Drop Spindle" for spinning wool, made from Camphor Laurel and Cypress Pine. Di kindly gave us a demonstration





Max Lehmann brought along 2 very interesting carved items



Roger Annells had 2 items, a natural edge bowl from Peach wood finished with a mixture of walnut oil and bees wax blended together. A bud vase with a copper inlay



4 pieces from Val Dalsanto a bowl from 2 timbers Red Gum and Mountain Ash. Two lidded bowls from "Tree Wood" and and earring stand made from Blackwood and finished with Shell-a-wax



A hollowed item from Graham Besley made from Red Gum and Huon Pine and finished with Danish oil

# DEMONSTRATION - TWICE TURNED

By Rick Hillier



Rick showed us the finished turning that resembled a submarine with a finial. It had four short legs splayed out in two directions. A very interesting model indeed.

Rick began with a block of wood 66mm square and 135mm long, machined on all faces so that it would fit into a jig accurately. He then showed how the holes for the legs were drilled. A jig with a sloping base and angled as well, with stops placed so the blank would be precisely positioned within the jig. The positions for drilling were marked and the jig would allow the leg holes to be drilled at the correct angles. Only two holes could be drilled before the jig needed to be reversed on the drill table to enable the final two holes to be drilled.

Rick

removed two jaws from the large scroll chuck so that the blank could be gripped at the centre of the long face. Now the hole in the top of the blank could be bored with a special Forstner bit. Two different diameter bits were used so that there was a step in the hole. The bits were able to make very clean holes. A cranked carbide tipped tool enlarged the hole and another used to deepen the hole and remove the small hole made by the tip of the Forstner bit. Rick used



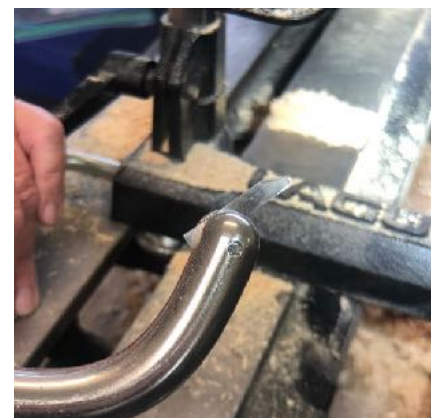
some abrasive on a dowel to smooth the bottom of the enlarged hole. A disc was turned by Rick to fit into the first hole bored. This

was stepped to match the hole shape and drilled and countersunk for a long screw. A second piece of wood was cut to fit into the body of the turning and made so that it was captured by the holes that had been drilled through the turning. A long screw was pushed through the hole in the disc and entered into the captured piece of wood. Then as it was tightened it drew the disc into the first hole and held it securely. This disc now



became a lid which had to be turned to match the profile of the rest of the turned piece. The head of the screw was far enough into the countersunk screw hole that it wouldn't be contacted by a turning tool.

The blank was removed from the chuck and turned between centres to turn a spigot at each end. The removed chuck jaws were now replaced so that Rick could hold the blank by one end to enable a 22mm hole to be drilled which connected to the first hole, after the end was turned flat, another piece of wood of a different colour was turned and glued in place, this was repeated at the other end. This piece was long enough to complete the elliptical shape, Calipers and a template enabled the accurate







shaping of the blank.

Rick had made yet another jig to enable him to hold the turning so that the other end of the blank could be turned to match what was already shaped. This involved what is often called a “donut chuck”, two discs of plywood connected by three or four lengths of “allthread” and machined in such a way that one piece of plywood is captured by the chuck and the other piece of plywood has a hole which fits over the turning. When the nuts on the allthread rods are tightened, the turning is held securely to enable turning to be done. This was also turned to a point, a template used to ensure the profile matched the other end.



All that needed to be done now was the turning of the legs and the finial to finish off the lid. Unfortunately Rick ran out of time so that these parts that were seen on the finished sample had to be deferred.

The audience were treated to a great variety of jigs that would have taken a lot of thought and experiment to produce. The complexity of the demonstration was a long way past the effort of bowl turning.

Cliff Walsh

*More photographs of Rick's Demonstration*

